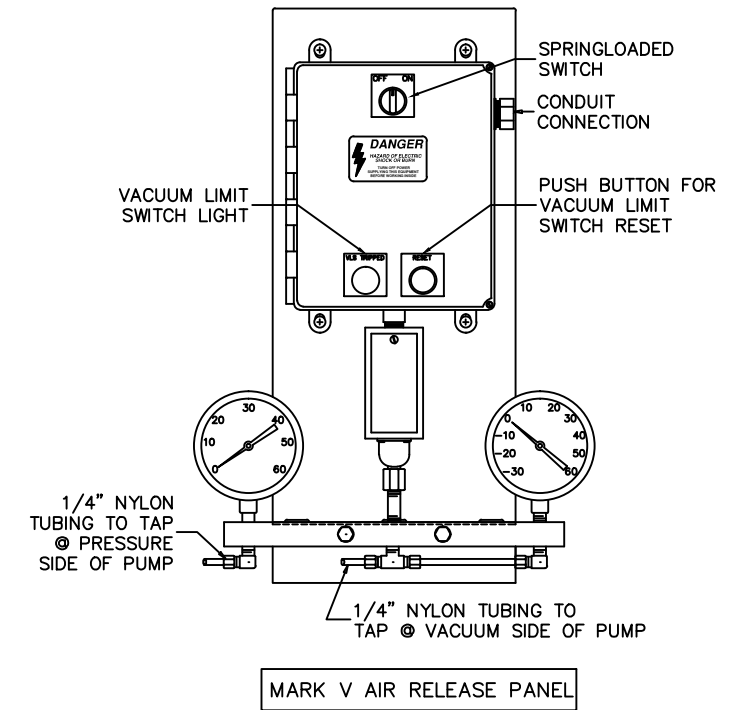
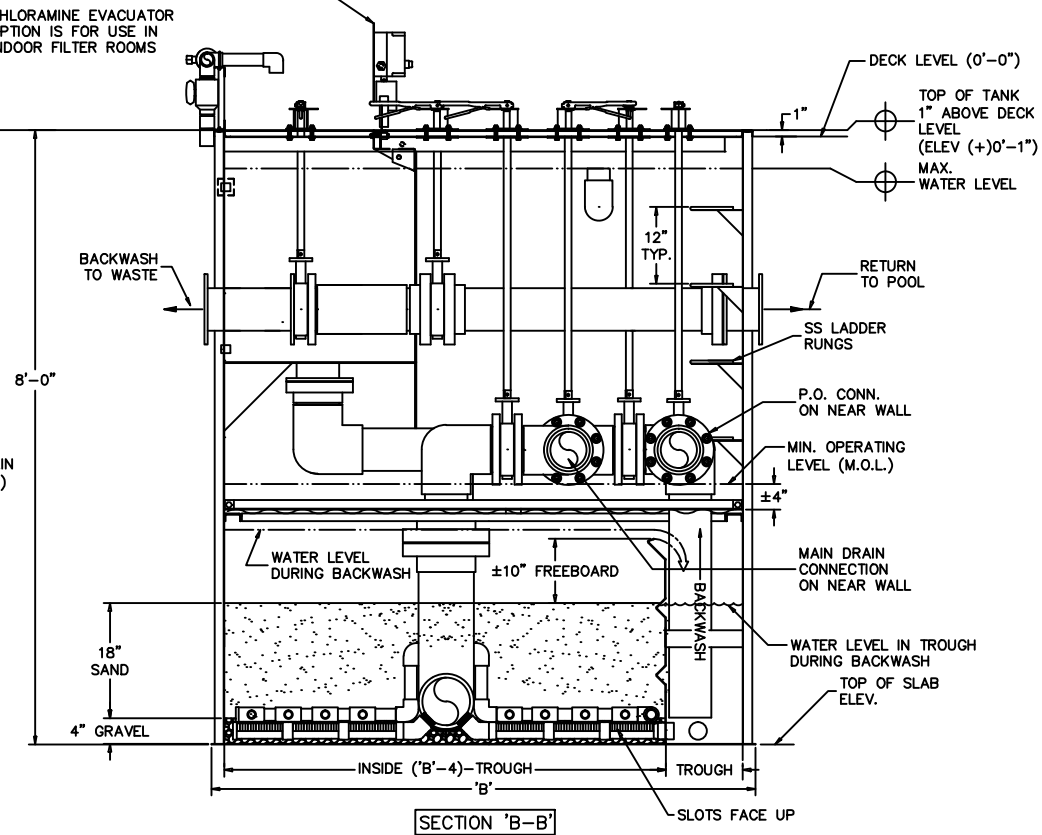
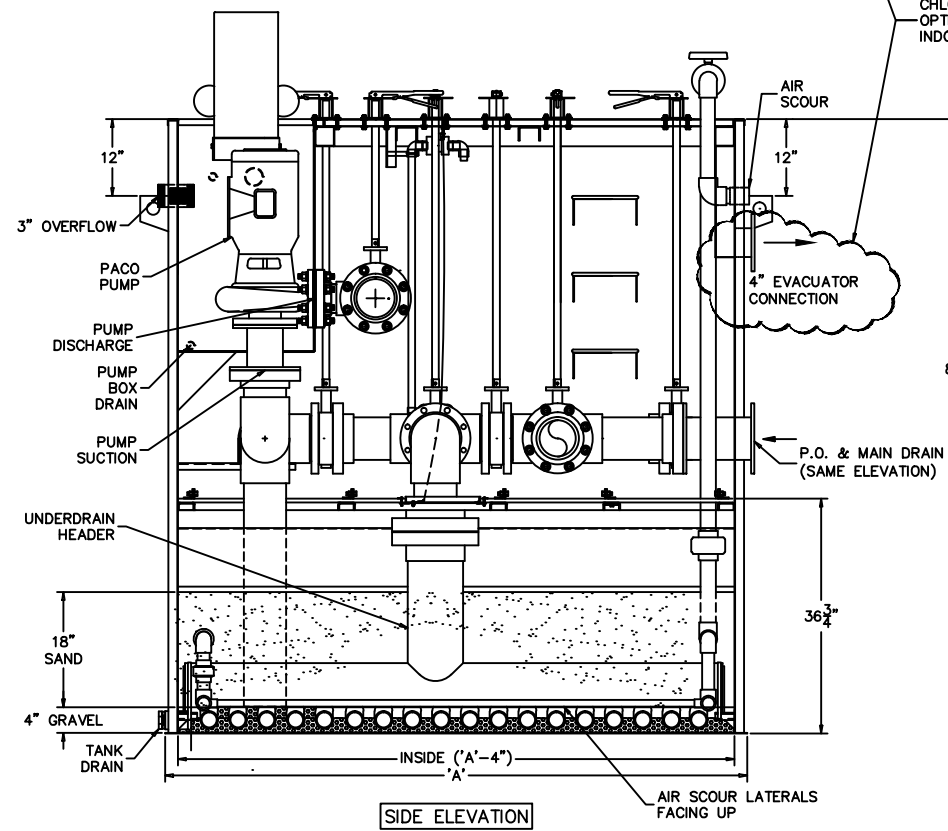
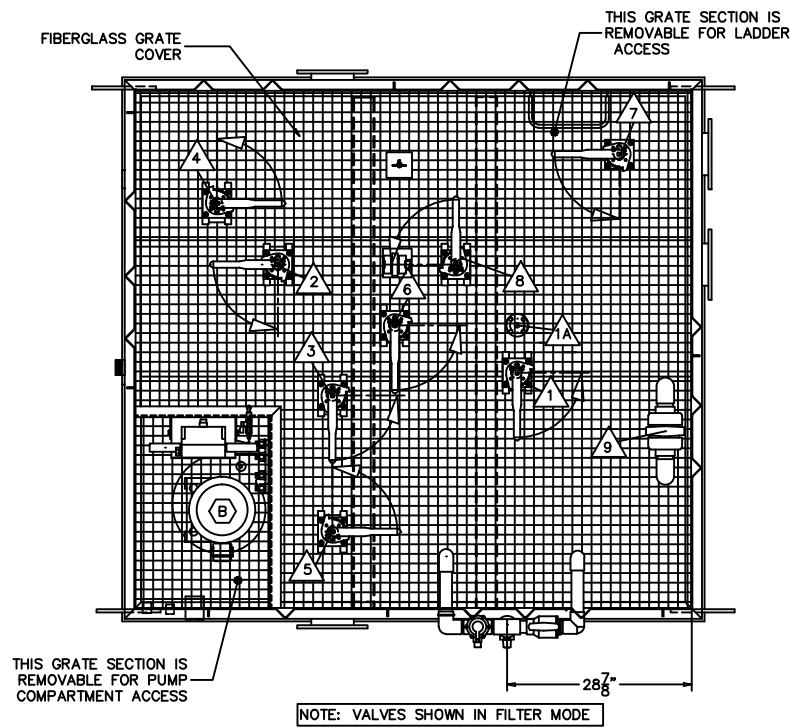
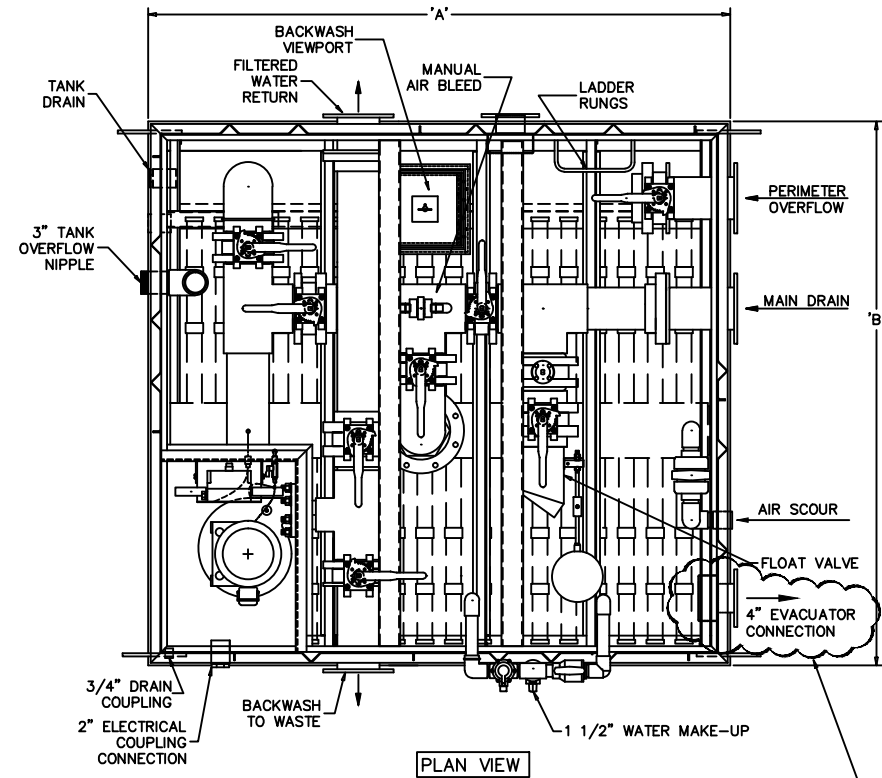


PADDOCK COMPAK MANUAL VACUUM SAND FILTERS



- NOTES:
1. FILTER CONNECTION LOCATIONS ARE APPROXIMATE AND MAY VARY BASED ON SPECIAL CIRCUMSTANCES OR INDIVIDUAL REQUIREMENTS OF FILTERS.
 2. AIR SCOUR CONNECTION (OPTIONAL) WILL NOT BE LARGER THAN 2".
 3. PERIMETER OVERFLOW CONNECTION MAY BE MOVED AS REQUIRED.
 4. ADDITIONAL PERIMETER OVERFLOW CONNECTION MAY BE ADDED.



PADDOCK COMPAK MANUAL VACUUM SAND FILTERS

Size FT ²	Catalog Number	Filter Rate, IN GPM @ 15 GPM/FT ²	Backwash Rate @ 7.5 GPM/FT ²	Tank Volume, Gal.	Length A, in	Width B, in	M.D. & P.O. Pipe Std. Sizes-D, in	Paco Pump, H.P.*	Ret./BW Pipe std. D, in	All-Star Air Scour Blower @ 2 CFM/FT ²	Shipping Weight, lbs	Media Capacity Cu.Ft.	
												Sand	Gravel
20	9792-1520	300	150	1623	76	60	8	3095-7, 7.5	4	RB3-101-3	2200	32	6
25	9792-1525	375	187	2363	92	72	8	3095-7, 7.5	4	RB3-101-3	2400	40	8
30	9792-1530	450	225	2496	82	85	8	3095-7, 10	6	RB3-101-3	2600	47	9
35	9792-1535	525	262	2496	82	85	10	4095-7, 10	6	RB3-101-3	2900	48	10
40	9794-1540	600	300	2633	91	85	10	4095-7, 15	6	RB3-105-3	3200	60	11
45	9794-1545	675	337	3127	91	94	10	4095-7, 15	6	RB3-105-3	3500	67	12
50	9794-1550	750	375	3450	100	94	12	4095-7, 15	6	RB3-105-3	3600	75	14
55	9794-1555	825	412	3706	106	96	12	4095-7, 15	6	RB4-205-3	3700	85	16
60	9795-1560	900	450	3924	112	96	12	4095-7, 20	6	RB6-305-3	3900	89	18
65	9795-1565	975	487	4142	118	96	12	5095-7, 20	8	RB6-305-3	4100	96	20
70	9795-1570	1050	525	4505	128	96	12	5095-7, 20	8	RB6-305-3	4400	103	22
75	9795-1575	1125	562	4978	141	96	14	5095-7, 20	8	RB6-305-3	4600	114	25
80	9796-1580	1200	600	5123	145	96	14	5095-7, 20	8	RB6-305-3	4800	125	26
85	9796-1585	1275	637	5450	154	96	16	5095-7, 20	8	RB6-305-3	5000	131	27
90	9796-1590	1350	675	5741	162	96	16	6095-1, 25	8	RB6-305-3	5400	138	29
95	9796-1595	1425	712	6068	171	96	16	6095-1, 25	8	RB6-305-3	6000	142	30
100	9798-15100	1500	750	6650	187	96	16	6012-3, 30	8	RB8-805-3	7400	146	32

*Pumps in chart are for THD of 50'. Higher heads may require larger pump or more horsepower.

AIR SCOUR BLOWERS (AIR SCOUR BACKWASH IS OPTIONAL)
ALL-STAR RB3-101-3, 1.1HP, 70 SCFM @ 2 PSI, 1.5" CONN.
ALL-STAR RB3-105-3, 1.5HP, 70 SCFM @ 2 PSI, 1.5" CONN.
ALL-STAR RB4-205-3, 2.5HP, 130 SCFM @ 2 PSI, 2" CONN.
ALL-STAR RB6-305-3, 3.5HP, 170 SCFM @ 2 PSI, 2" CONN.
ALL-STAR RB8-805-3, 8.5HP, 320 SCFM @ 2 PSI, 2.5" CONN.



Certified to
NSF/ANSI Standard 50

